

**MISSION**

Loaves & Fishes exists as a mission of love and faith by providing food and temporary support services to residents of Ayer, Devens, Groton, Harvard, Littleton and Shirley and advocates for changes by its clients that will promote independence and self-reliance.

**BOARD OF TRUSTEES**

Mary Markham, *President*  
 James Hanlon, *Vice President*  
 Don Siegrist, *Treasurer*  
 Lauren Farrell, *Secretary*  
 Joanne Ouellette,  
 Joseph Harrington, Scott Lewis, Aleta Manugian, Kathleen O'Connor

**STAFF**

Patricia Stern, *Executive Director*  
 Paul Niemira, *Food Coordinator*  
 Theresa Wilson, *Client Advocate*  
 Karen DeGagne, *Volunteer & Office Coordinator*

**OPEN PANTRY HOURS**

**Wednesday and Friday**  
 9:45AM-12:30PM  
 (Doors open at 9:30AM)  
**First and third Saturdays of the month**  
 9:00AM-11:00AM  
 (Doors open at 8:45AM)  
**Second Tuesday of the month**  
 6:00PM-8:00PM  
 (Doors open at 5:45PM)

Closed when Ayer Shirley Regional School District is closed or delayed due to inclement weather.

**FOOD DONATION TIMES**

During all Open Pantry Hours  
 Monday and Wednesday evenings from 7:00PM-8:00PM

**CLOTHING DONATION TIMES**

During all Open Pantry Hours and  
 Monday 10:00AM-12:00PM  
 Monday and Wednesday evenings from 7:00PM-8:00PM

**LOCATION**

234 Barnum Road, Devens, MA  
 Mailing address:  
 PO Box 1, Ayer, MA 01432  
 Telephone: 978.772.4627  
 Fax: 978.772.7395

**Fresh is best!**

The benefits of eating fresh fruits and vegetables are real. They are an important source of vitamins, minerals, fiber, and fruits and vegetables are naturally low in fat and calories, yet will still make you feel full. The Greater Boston Food Bank (GBFB), where we are able to purchase food at drastically lower prices, also recognizes the importance in providing fresh fruits and vegetables to those in need. "Out of the 51 million pounds of food the GBFB delivers each



year, 21 percent is fresh produce," the Milford Daily News reported in a July article. Since the beginning of June, approximately 20,200 pounds of fresh fruits and vegetables have made their way to the lunch and dinner tables of over 488 local families!

This summer, 20,200 pounds of fresh fruits and vegetables have made their way to lunch and dinner tables of over 488 local families!

season, Gaining Ground, a non-profit organic farm in Concord, and commercial farms Springdell Farm in Littleton and Applefield Farm in Stow, are frequent donors of farm fresh local produce. Our Glean Team, a group of volunteers from the Unitarian Church in Harvard, glean produce from local commercial farms and delivers it to the food pantry, and The Garden at Church Meadows in Littleton, tended by volunteers, grows specifically for Loaves & Fishes!

The support is overwhelming, and Loaves & Fishes, especially during the New England growing season, is no longer just soup, pasta and peanut butter! In partnering with local supermarkets, local farms, and spreading the word to our neighbors, we have the ability to regularly offer fresh, healthy produce to families in need.

For the second year in a row, Central Ave. Compassionate Care, Inc. in Ayer has spread the word to neighborhood gardeners encouraging all to call them if their gardens are overflowing with fresh fruits and vegetables.



Compassionate Care will pick up produce donations and deliver them directly to Loaves & Fishes! Patrick Hughes, a local resident, tends a garden on his property specifically for the pantry and has donated close to 100 pounds of produce so far this year! Thayer Family Farm in Harvard regularly supports the pantry too!

If your garden is overflowing, won't you share with your neighbors in need? If you find yourself with extra to share, remember the food pantry! Visit our website at

[www.loavesfishespantry.org](http://www.loavesfishespantry.org) for more information on making a donation!



Check out our new website!  
[www.loavesfishespantry.org](http://www.loavesfishespantry.org)  
 is now optimized for mobile!

## Loaves & Fishes Certified! Cultivating Our Most Valuable Resource!



Loaves & Fishes is one of four non-profits in Massachusetts to complete the extensive program requirements to earn Points of Light's Service Enterprise certification!

Points of Light was founded in 1990 by President George H. W. Bush as an independent, nonpartisan, nonprofit organization to encourage and empower the spirit of service. It developed a certification program, Service Enterprise, which provides research-based assessment, training and consulting tools to strengthen the capacity of nonprofits to leverage volunteers and their skills to address community needs.

United Way of North Central Massachusetts Volunteer Center spearheaded the initiative locally in partnership with Mass Service Alliance, the state volunteer agency.

"As the region's volunteer center, we thought it was important to help nonprofits develop the very best practices when it comes to their volunteers," said Fran Longton, volunteer coordinator for United Way of North Central Massachusetts. "Because volunteers are vital to nonprofits, it makes sense to utilize the very best practices when it comes to our most valuable resource."



Loaves & Fishes held our 2nd Annual Fundraiser Golf Tournament on Monday, June 8th at Shaker Hills Golf Club in Harvard. Thanks to the organizers, dedicated volunteers, donors, sponsors and golfers, this year's tournament raised \$10,200! Thank you!



## Loaves & Fishes Special Programs

### BACKPACK PROGRAM

*Littleton Westford Emblem Club #244* generously supported our **Backpack Program** AND our **Campership Program** through Buttons for Babes, part of their literacy project, which they use strictly for charitable causes directed for children. Thank you for your continued support and generosity!



### CAMPERSHIP-ENRICHMENT PROGRAM

*Harvard Unitarian Universalist Church* supported our Campership program by donating \$2,000! This program gives children the opportunity to attend camp and participate in enrichment programs!



## 2015 Harvest Club\*

## Our Partners

### GOLD LEVEL PARTNERS

Applefield Farm  
 Bemis Associates  
 Community Foundation of North  
 Central MA  
 Digital Federal Credit Union,  
 Marlborough  
 Donelan's Supermarket—Acton  
 Donelan's Supermarket—Littleton  
 EFSP National Board  
 Gaining Ground  
 Judy Grande  
 Groton Neighborhood Food Project  
 Hannaford Supermarket—Ayer  
 Hannaford Supermarket—Lunenburg  
 Hannaford Supermarket—Townsend  
 Harvard Post Office  
 Holy Trinity Parish  
 Independent Church Of The Free Spirit  
 Timothy Ingraham  
 Scott Lewis  
 Market Basket—Littleton  
 Paul & Mimi Matisse  
 Nashoba Good Friday Walk  
 JoAnn Nicewicz  
 Stephen & Cynthia O'Brien  
 Jon & Jesse Panek  
 Roche Brothers Supermarket—Acton  
 Rotary Club of Littleton  
 Saint Anne Parish  
 Senate Construction  
 Ted & Mary Shasta  
 Shaw's Supermarket—Groton  
 Shirley Scout Food Drive  
 Trader Joe's  
 Union Congregational Church  
 United Way of North Central MA

### SILVER LEVEL PARTNERS

Ace Bermuda Insurance Ltd.  
 Ayer Post Office  
 Ayer/Shirley Recycle  
 Steve Bakke & Julie Staraitis  
 BJ's Wholesale Club  
 Central Ave. Compassionate Care  
 Kathleen Cole  
 Congregational Church of Littleton  
 Deluxe Corp.  
 Donelan's Supermarket—Groton  
 Donelan's Supermarket—Pepperell  
 Federal Bureau of Prisons  
 First Church Unitarian  
 Fitness Your Weigh  
 Greater Lowell Community Foundation  
 Groton Scouting

Groton-Dunstable Regional Schools  
 Harvard Lions Club  
 Harvard Unitarian Universalist Church  
 Kimball's Farm  
 Douglas & Sandy McPherson  
 Nashoba Valley Medical Center  
 Project Bread  
 Stephen Roach & Amy Hilbert  
 Heidrun Ryan  
 Saint Andrew's Episcopal Church  
 Donald & Janet Stevens  
 Albert & Elizabeth Stone  
 Ted & Connie Lapres Fund  
 The Flatgard Group  
 West Acton Baptist Church  
 Wilson Brothers HVAC, Inc.

### BRONZE LEVEL PARTNERS

Ayer Shirley Regional High School  
 Ayer Shirley Regional Middle School  
 Baddour Family Foundation  
 BMW Car Club of America  
 Arthur Boisseau & Marcia Gilson  
 Cynthia Bryant  
 Lee Burton  
 Peter and Diane Carson  
 John Cauley  
 CD Willy's  
 Cisco Systems  
 William & Susan Coney  
 Congregational Church UCC Harvard  
 William Conley  
 Curtis-Straus LLC  
 The Davis Family  
 John & Nancy Dwyer  
 Senator James Eldridge  
 Epic Enterprises, Inc.  
 Jim & Lorraine Farnsworth  
 First Baptist Church  
 First Parish Church of Groton  
 Read Fleming  
 Garden at Church Meadows  
 James & Sharon Grier  
 Groton Knights of Columbus #13140  
 Groton Post Office  
 Groton Public Library  
 Groton Women's Club  
 Groton-Pepperell Rotary Club  
 Gary M. Gumuchian  
 Harvard Women's Club  
 Hawk's Nest  
 Hildreth Elementary School  
 Holy Trinity Parish  
 Michael Horton  
 JK Farnsworth Company  
 Stephen & Diana Keaney  
 Stephen & Mary Keville  
 Warren & Meredith Kundert

Littleton Council of Churches  
 Littleton Fire Department  
 Littleton Middle School  
 Littleton Post Office  
 Littleton Westford Emblem Club  
 Brendan & Veronica Lowney  
 Curtis & Kathleen Marble  
 Markham Group, Inc.  
 Mary Markham  
 Steven McLatchy  
 Nancy F. Washington, P.C.  
 Nashoba Regional High School  
 New England Apple Products Co.  
 North Country Porsche Club of America  
 North Middlesex Savings Bank—Ayer  
 Northern Bank & Trust—Woburn  
 Oak Meadow Montessori  
 ODIC Incorporated  
 Kathleen Oosterman  
 Our Lady of Grace Parish  
 Richard & Bernice Packard, Sr.  
 Ann & Richard Perreault  
 Philip Rayla & Diane Herlihy-Rayla  
 Red Tail Golf Club  
 Reuben Hoar Library  
 Robert & Joan Dircks Foundation  
 Saint-Gobain  
 Tom & Verna Sefranek  
 Russell & Linda Shappy  
 Shepherd of the Valley Lutheran Church  
 Shirley Post Office  
 Don & Heidi Siegrist  
 John Simko  
 Otto & Dorothy Solbrig  
 St. Anthony of Padua Parish  
 St. Catherine of Alexandria Church  
 St. Mary's Catholic Church  
 St. Matthew's United Methodist Church  
 Cornelius Sullivan  
 Tag Heating & Cooling Inc.  
 The McHashem Fund  
 Town of Littleton  
 Trinity Chapel Episcopal Church  
 United Steelworkers of America Local 506  
 United Way of Massachusetts Bay &  
 Merrimack Valley  
 United Way of Tri-County  
 Richard & Jean Walsh  
 Richard & Nancy Washington  
 Sara Weeks  
 Weetabix  
 Westward Orchards, Inc.  
 Willard Farm  
 Douglas Williams  
 Worker's Credit Union

*\*Some donors wish to remain anonymous and do not appear on this list.*

## Community Partners



This year, Fitness Your Weigh's Plank-a-thon raised \$2,114.60! This annual event has raised over \$10,000 in three years for Loaves & Fishes! AMAZING!



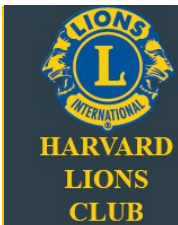
Shaw's Supermarket in Groton is supporting Loaves & Fishes through their "Summer of Giving Drive"! Donate \$5, \$10 or \$15 at the check out. (Pictured: Cheryl, Manager).



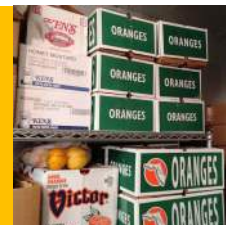
The Littleton Sustainability Committee's Zero Waste Day on June 13th collected almost \$850 for Loaves & Fishes!



Cisco continuously supports Loaves & Fishes by encouraging their employees to volunteer and donate in many ways. Cisco recently partnered with PS It Matters and Purchasing 4 My Cause to commemorate their 30th anniversary. Proceeds from T-shirt sales were donated to the Pantry!



The Harvard Lions Club delivered 14 cases of fresh oranges in March, providing some sunshine we needed after such a tough winter! This is in addition to their annual generous financial donation!



Trader Joe's, 2015 Outstanding Community Partner Award



## Extraordinary Young People Getting Involved!

**GROTON-DUNSTABLE REGIONAL SCHOOL DISTRICT**  
Box 729, 145 Main Street, Groton, MA 01450 978-448-5505

Collected and donated 1,284 pounds of food!



Brian Fay and Ariella Bull, students from Acton-Boxborough and members of the Bare Hill Rowing Team in Harvard, present Patty Stern, Executive Director, with \$750.00 raised during a recent Ergathon!

Fourth graders from the Hildreth Elementary School of Harvard conducted a school-wide food drive collecting and donating 450 pounds of food to Loaves & Fishes!



HAPPY BIRTHDAY

Thank you to Liam Morrison of Harvard! He requested donations for Loaves & Fishes during his 11th birthday celebration! You make a difference!



Alice Rennie from the Harvard Women's Club visited the pantry to donate \$1,200 to purchase food and to support our Campership-Enrichment Program. Thank you!



The Rotary Club of Littleton presented \$7,500 to Loaves and Fishes! The service-oriented club raised the funds at the 2014 Masquerade Ball. Plans are underway for the club's 3rd annual Masquerade Ball, November 7th at the Holiday Inn, Boxborough. The Rotary Club of Littleton was honored in June by Loaves & Fishes as an Outstanding Community Partner. Thank you for your service and support!

## Who do we help?

*hope*

A single mom in our service area visits Loaves & Fishes once a month. This busy mom of four works two jobs and visiting the pantry helps her make ends meet and feed her family.

A man from Shirley found himself out of work and visited Loaves & Fishes for help. He's been working full time for over a year and hasn't been to the pantry. He recently stopped in for some help because he's saving money to repair his car.

## Do you or someone you know need our help?

Loaves & Fishes is here to provide food and temporary support to anyone who needs it in Ayer, Devens, Harvard, Groton, Littleton and Shirley!

Perhaps you or someone you know has lost their job. Maybe there was a divorce or an unexpected illness or an accident resulting in medical bills, making it difficult to make ends meet. It could be you, or it could be your relative or your neighbor. Chances are, you know of someone who could use our help. Please tell them about us.



**inspire.**  
John T. MacDonald  
inspired others to help  
neighbors in need  
**be inspired.**

John MacDonald could regularly be found on weekends at the Devens airstrip in Ayer where he was the course designer for the Boston BMW Club and the North Country Porsche Club autocross events. When John passed away in 2010, his autocross "brothers" helped to empty his garage full of car-related objects, eventually sorting, pricing, advertising and selling his collection. John had always been about paying it forward and his memory was honored when the proceeds from the sale of his beloved items were donated to Loaves & Fishes. His friends were pleased to honor John's memory by helping his neighbors in need, "Because those who knew him best say that is the sort of person he was." Thank you.

## Seeking Volunteers

| Day                                | Time           | Volunteers needed for:                                                                | Notes                                                       |
|------------------------------------|----------------|---------------------------------------------------------------------------------------|-------------------------------------------------------------|
| Mondays and Wednesdays             | 7PM-8:00PM     | Stocking Session                                                                      | All ages welcome. Under 15 must be accompanied by an adult. |
| Wednesdays                         | 9:15AM-12:30PM | Open Pantry Session. Work directly with clients or behind the scenes.                 | Must be 18. Shifts from 11AM-1:30PM available               |
| Fridays                            | 9:15AM-12:30PM | Open Pantry Session Opportunities to work directly with clients or behind the scenes. | Must be 18. Shifts from 11AM-1:30PM available               |
| 2nd Tuesday evening of the month   | 5:30PM-8PM     | Open Pantry Session. Work directly with clients or behind the scenes.                 | Must be 18.                                                 |
| 1st and 3rd Saturdays of the month | 8:30AM-11:00AM | Open Pantry Session Opportunities to work directly with clients or behind the scenes. | Must be 18.                                                 |
| Two Friday afternoons every month  | 3:30PM-4:30PM  | Stocking ( <i>Fridays preceding 1st and 3rd Saturdays of the month</i> )              | All ages welcome. Under 15 must be accompanied by an        |

Visit our website at [www.loavesfishespantry.org](http://www.loavesfishespantry.org) to register for an Information Session!

# Volunteer

**REGISTRATION is now automated!**

Visit our website at [www.loavesfishespantry.org](http://www.loavesfishespantry.org)!

Thanks to Scott Lewis, Board of Trustees member and volunteer extraordinaire, our website is updated and optimized for mobile! Our new and improved website features on-line registration for New Volunteer Information Sessions and on-line registration for volunteer activities through our new volunteer portal!

Loaves & Fishes Food Pantry, Inc.  
 PO Box 1  
 Ayer, MA 01432

Nonprofit Org.  
 U.S. POSTAGE PAID  
 Ayer, MA 01432  
 Permit No. 4



In an effort to *reduce waste, recycle and redirect our resources*, please consider receiving this newsletter electronically instead of by mail.

Call 978.772.4627 x300 or email [tohelp@loavesfishespantry.org](mailto:tohelp@loavesfishespantry.org) and provide your email address!



## General MOST NEEDED ITEMS LIST

Ensure, Helpers (hamburger & tuna), Canned Pasta/Canned Chile, Canned White Tuna, Creamed Soups/Hearty Soups, Canned Baked Beans, Canned Pineapple/Pears/Apricots/Mixed Fruit, Canned Tomato Sauce/Puree & Paste, Canned Corn, Crackers/Saltines, Canned Chickpeas/Garbanzo Beans, Condiments (ketchup, mayo, mustard), Pasta (ziti, rotini, shells, rigatoni), Coffee, Tea, Juice, Feminine Care Products, Toothpaste/Toothbrushes, Shampoo/Conditioner, Shaving Products, Deodorant, Soap (Bars)

### Contact Us:

Telephone: (978) 772-4627

Visit our website at: [www.loavesfishespantry.org](http://www.loavesfishespantry.org)

facebook

Find us on Facebook  
 Follow us on Twitter

twitter

### Collection Box Locations

| AYER                          | HARVARD                           |
|-------------------------------|-----------------------------------|
| Ayer Post Office              | Harvard Post Office               |
| Nashoba Valley Medical Center | LITTLETON                         |
| North Middlesex Savings Bank  | Citizen's Savings Bank            |
| The Cottage Restaurant        | Donelan's Supermarket             |
| The Markham Group             | North Middlesex Savings Bank      |
| DEVENS                        | Northern Bank & Trust             |
| North Middlesex Savings Bank  | Littleton Police Department       |
| GROTON                        | Littleton Post Office             |
| Donelan's Supermarket         | Knox Realty                       |
| Groton Post Office            | Market Basket, The Point, Rte 119 |
| Groton Public Library         | SHIRLEY                           |
| Middlesex Bank                | Shirley Post Office               |
| North Middlesex Savings Bank  | Hazen Library                     |
| Town Hall                     | North Middlesex Savings Bank      |
| Groton Senior Center          | Phoenix Park, Building D          |
| Clover Farm General Store     |                                   |

Donation boxes can also be found in many places of worship in all six towns served by Loaves & Fishes