

MISSION

Loaves & Fishes exists as a mission of love and faith by providing food and temporary support services to residents of Ayer, Devens, Groton, Harvard, Littleton and Shirley and advocates for changes by its clients that will promote independence and self-reliance.

BOARD OF TRUSTEES

Mary Markham, *President*
 James Hanlon, *Vice President*
 Don Siegrist, *Treasurer*
 Lauren Farrell, *Secretary*
 Joanne Ouellette,
 Joseph Harrington, Scott Lewis, Aleta Manugian, Kathleen O'Connor

STAFF

Patricia Stern, *Executive Director*
 Paul Niemira, *Food Coordinator*
 Theresa Wilson, *Client Advocate*
 Karen DeGagne, *Volunteer & Office Coordinator*

OPEN PANTRY HOURS

Wednesday and Friday
 9:45AM-12:30PM
 (Doors open at 9:30AM)
First and third Saturdays of the month
 9:00AM-11:00AM
 (Doors open at 8:45AM)
Second Tuesday of the month
 6:00PM-8:00PM
 (Doors open at 5:45PM)

Closed when Ayer Shirley Regional School District is closed or delayed due to inclement weather.

FOOD DONATION TIMES

During all Open Pantry Hours
 Monday and Wednesday evenings from 7:00PM-8:00PM

CLOTHING DONATION TIMES

During all Open Pantry Hours and
 Monday 10:00AM-12:00PM
 Monday and Wednesday evenings from 7:00PM-8:00PM

LOCATION

234 Barnum Road, Devens, MA
 Mailing address:
 PO Box 1, Ayer, MA 01432
 Telephone: 978.772.4627
 Fax: 978.772.7395

Fresh is best!

The benefits of eating fresh fruits and vegetables are real. They are an important source of vitamins, minerals, fiber, and fruits and vegetables are naturally low in fat and calories, yet will still make you feel full. The Greater Boston Food Bank (GBFB), where we are able to purchase food at drastically lower prices, also recognizes the importance in providing fresh fruits and vegetables to those in need. "Out of the 51 million pounds of food the GBFB delivers each



year, 21 percent is fresh produce," the Milford Daily News reported in a July article. Since the beginning of June, approximately 20,200 pounds of fresh fruits and vegetables have made their way to the lunch and dinner tables of over 488 local families!

This summer, 20,200 pounds of fresh fruits and vegetables have made their way to lunch and dinner tables of over 488 local families!

season, Gaining Ground, a non-profit organic farm in Concord, and commercial farms Springdell Farm in Littleton and Applefield Farm in Stow, are frequent donors of farm fresh local produce. Our Glean Team, a group of volunteers from the Unitarian Church in Harvard, glean produce from local commercial farms and delivers it to the food pantry, and The Garden at Church Meadows in Littleton, tended by volunteers, grows specifically for Loaves & Fishes!

The support is overwhelming, and Loaves & Fishes, especially during the New England growing season, is no longer just soup, pasta and peanut butter! In partnering with local supermarkets, local farms, and spreading the word to our neighbors, we have the ability to regularly offer fresh, healthy produce to families in need.

For the second year in a row, Central Ave. Compassionate Care, Inc. in Ayer has spread the word to neighborhood gardeners encouraging all to call them if their gardens are overflowing with fresh fruits and vegetables.



Compassionate Care will pick up produce donations and deliver them directly to Loaves & Fishes! Patrick Hughes, a local resident, tends a garden on his property specifically for the pantry and has donated close to 100 pounds of produce so far this year! Thayer Family Farm in Harvard regularly supports the pantry too!

If your garden is overflowing, won't you share with your neighbors in need? If you find yourself with extra to share, remember the food pantry! Visit our website at

www.loavesfishespantry.org for more information on making a donation!



Check out our new website!
www.loavesfishespantry.org
 is now optimized for mobile!

Loaves & Fishes Certified! Cultivating Our Most Valuable Resource!



Loaves & Fishes is one of four non-profits in Massachusetts to complete the extensive program requirements to earn Points of Light's Service Enterprise certification!

Points of Light was founded in 1990 by President George H. W. Bush as an independent, nonpartisan, nonprofit organization to encourage and empower the spirit of service. It developed a certification program, Service Enterprise, which provides research-based assessment, training and consulting tools to strengthen the capacity of nonprofits to leverage volunteers and their skills to address community needs.

United Way of North Central Massachusetts Volunteer Center spearheaded the initiative locally in partnership with Mass Service Alliance, the state volunteer agency.

"As the region's volunteer center, we thought it was important to help nonprofits develop the very best practices when it comes to their volunteers," said Fran Longton, volunteer coordinator for United Way of North Central Massachusetts. "Because volunteers are vital to nonprofits, it makes sense to utilize the very best practices when it comes to our most valuable resource."



Loaves & Fishes held our 2nd Annual Fundraiser Golf Tournament on Monday, June 8th at Shaker Hills Golf Club in Harvard. Thanks to the organizers, dedicated volunteers, donors, sponsors and golfers, this year's tournament raised \$10,200! Thank you!



BACKPACK PROGRAM

Littleton Westford Emblem Club #244 generously supported our **Backpack Program** AND our **Campership Program** through Buttons for Babes, part of their literacy project, which they use strictly for charitable causes directed for children. Thank you for your continued support and generosity!



CAMPERSHIP-ENRICHMENT PROGRAM

Harvard Unitarian Universalist Church supported our Campership program by donating \$2,000! This program gives children the opportunity to attend camp and participate in enrichment programs!



2015 Harvest Club*

Our Partners

GOLD LEVEL PARTNERS

Applefield Farm
 Bemis Associates
 Community Foundation of North
 Central MA
 Digital Federal Credit Union,
 Marlborough
 Donelan's Supermarket—Acton
 Donelan's Supermarket—Littleton
 EFSP National Board
 Gaining Ground
 Judy Grande
 Groton Neighborhood Food Project
 Hannaford Supermarket—Ayer
 Hannaford Supermarket—Lunenburg
 Hannaford Supermarket—Townsend
 Harvard Post Office
 Holy Trinity Parish
 Independent Church Of The Free Spirit
 Timothy Ingraham
 Scott Lewis
 Market Basket—Littleton
 Paul & Mimi Matisse
 Nashoba Good Friday Walk
 JoAnn Nicewicz
 Stephen & Cynthia O'Brien
 Jon & Jesse Panek
 Roche Brothers Supermarket—Acton
 Rotary Club of Littleton
 Saint Anne Parish
 Senate Construction
 Ted & Mary Shasta
 Shaw's Supermarket—Groton
 Shirley Scout Food Drive
 Trader Joe's
 Union Congregational Church
 United Way of North Central MA

SILVER LEVEL PARTNERS

Ace Bermuda Insurance Ltd.
 Ayer Post Office
 Ayer/Shirley Recycle
 Steve Bakke & Julie Staraitis
 BJ's Wholesale Club
 Central Ave. Compassionate Care
 Kathleen Cole
 Congregational Church of Littleton
 Deluxe Corp.
 Donelan's Supermarket—Groton
 Donelan's Supermarket—Pepperell
 Federal Bureau of Prisons
 First Church Unitarian
 Fitness Your Weigh
 Greater Lowell Community Foundation
 Groton Scouting

Groton-Dunstable Regional Schools
 Harvard Lions Club
 Harvard Unitarian Universalist Church
 Kimball's Farm
 Douglas & Sandy McPherson
 Nashoba Valley Medical Center
 Project Bread
 Stephen Roach & Amy Hilbert
 Heidrun Ryan
 Saint Andrew's Episcopal Church
 Donald & Janet Stevens
 Albert & Elizabeth Stone
 Ted & Connie Lapres Fund
 The Flatgard Group
 West Acton Baptist Church
 Wilson Brothers HVAC, Inc.

BRONZE LEVEL PARTNERS

Ayer Shirley Regional High School
 Ayer Shirley Regional Middle School
 Baddour Family Foundation
 BMW Car Club of America
 Arthur Boisseau & Marcia Gilson
 Cynthia Bryant
 Lee Burton
 Peter and Diane Carson
 John Cauley
 CD Willy's
 Cisco Systems
 William & Susan Coney
 Congregational Church UCC Harvard
 William Conley
 Curtis-Straus LLC
 The Davis Family
 John & Nancy Dwyer
 Senator James Eldridge
 Epic Enterprises, Inc.
 Jim & Lorraine Farnsworth
 First Baptist Church
 First Parish Church of Groton
 Read Fleming
 Garden at Church Meadows
 James & Sharon Grier
 Groton Knights of Columbus #13140
 Groton Post Office
 Groton Public Library
 Groton Women's Club
 Groton-Pepperell Rotary Club
 Gary M. Gumuchian
 Harvard Women's Club
 Hawk's Nest
 Hildreth Elementary School
 Holy Trinity Parish
 Michael Horton
 JK Farnsworth Company
 Stephen & Diana Keaney
 Stephen & Mary Keville
 Warren & Meredith Kundert

Littleton Council of Churches
 Littleton Fire Department
 Littleton Middle School
 Littleton Post Office
 Littleton Westford Emblem Club
 Brendan & Veronica Lowney
 Curtis & Kathleen Marble
 Markham Group, Inc.
 Mary Markham
 Steven McLatchy
 Nancy F. Washington, P.C.
 Nashoba Regional High School
 New England Apple Products Co.
 North Country Porsche Club of America
 North Middlesex Savings Bank—Ayer
 Northern Bank & Trust—Woburn
 Oak Meadow Montessori
 ODIC Incorporated
 Kathleen Oosterman
 Our Lady of Grace Parish
 Richard & Bernice Packard, Sr.
 Ann & Richard Perreault
 Philip Rayla & Diane Herlihy-Rayla
 Red Tail Golf Club
 Reuben Hoar Library
 Robert & Joan Dircks Foundation
 Saint-Gobain
 Tom & Verna Sefranek
 Russell & Linda Shappy
 Shepherd of the Valley Lutheran Church
 Shirley Post Office
 Don & Heidi Siegrist
 John Simko
 Otto & Dorothy Solbrig
 St. Anthony of Padua Parish
 St. Catherine of Alexandria Church
 St. Mary's Catholic Church
 St. Matthew's United Methodist Church
 Cornelius Sullivan
 Tag Heating & Cooling Inc.
 The McHashem Fund
 Town of Littleton
 Trinity Chapel Episcopal Church
 United Steelworkers of America Local 506
 United Way of Massachusetts Bay &
 Merrimack Valley
 United Way of Tri-County
 Richard & Jean Walsh
 Richard & Nancy Washington
 Sara Weeks
 Weetabix
 Westward Orchards, Inc.
 Willard Farm
 Douglas Williams
 Worker's Credit Union

**Some donors wish to remain anonymous and do not appear on this list.*

Community Partners



This year, Fitness Your Weigh's Plank-a-thon raised \$2,114.60! This annual event has raised over \$10,000 in three years for Loaves & Fishes! AMAZING!



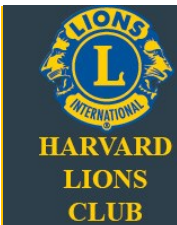
Shaw's Supermarket in Groton is supporting Loaves & Fishes through their "Summer of Giving Drive"! Donate \$5, \$10 or \$15 at the check out. (Pictured: Cheryl, Manager).



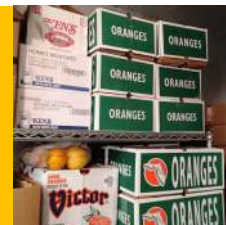
The Littleton Sustainability Committee's Zero Waste Day on June 13th collected almost \$850 for Loaves & Fishes!



Cisco continuously supports Loaves & Fishes by encouraging their employees to volunteer and donate in many ways. Cisco recently partnered with PS It Matters and Purchasing 4 My Cause to commemorate their 30th anniversary. Proceeds from T-shirt sales were donated to the Pantry!



The Harvard Lions Club delivered 14 cases of fresh oranges in March, providing some sunshine we needed after such a tough winter! This is in addition to their annual generous financial donation!



Trader Joe's, 2015 Outstanding Community Partner Award



The Rotary Club of Littleton presented \$7,500 to Loaves and Fishes! The service-oriented club raised the funds at the 2014 Masquerade Ball. Plans are underway for the club's 3rd annual Masquerade Ball, November 7th at the Holiday Inn, Boxborough. The Rotary Club of Littleton was honored in June by Loaves & Fishes as an Outstanding Community Partner. Thank you for your service and support!

Extraordinary Young People Getting Involved!

GROTON-DUNSTABLE REGIONAL SCHOOL DISTRICT
Box 729, 145 Main Street, Groton, MA 01450 978-448-5505

Collected and donated 1,284 pounds of food!



Brian Fay and Ariella Bull, students from Acton-Boxborough and members of the Bare Hill Rowing Team in Harvard, present Patty Stern, Executive Director, with \$750.00 raised during a recent Ergathon!

Fourth graders from the Hildreth Elementary School of Harvard conducted a school-wide food drive collecting and donating 450 pounds of food to Loaves & Fishes!



HAPPY BIRTHDAY

Thank you to Liam Morrison of Harvard! He requested donations for Loaves & Fishes during his 11th birthday celebration! You make a difference!



Alice Rennie from the Harvard Women's Club visited the pantry to donate \$1,200 to purchase food and to support our Campership-Enrichment Program. Thank you!

Who do we help?

hope

A single mom in our service area visits Loaves & Fishes once a month. This busy mom of four works two jobs and visiting the pantry helps her make ends meet and feed her family.

A man from Shirley found himself out of work and visited Loaves & Fishes for help. He's been working full time for over a year and hasn't been to the pantry. He recently stopped in for some help because he's saving money to repair his car.

Do you or someone you know need our help?

Loaves & Fishes is here to provide food and temporary support to anyone who needs it in Ayer, Devens, Harvard, Groton, Littleton and Shirley!

Perhaps you or someone you know has lost their job. Maybe there was a divorce or an unexpected illness or an accident resulting in medical bills, making it difficult to make ends meet. It could be you, or it could be your relative or your neighbor. Chances are, you know of someone who could use our help. Please tell them about us.



John MacDonald could regularly be found on weekends at the Devens airstrip in Ayer where he was the course designer for the Boston BMW Club and the North Country Porsche Club autocross events. When John passed away in 2010, his autocross "brothers" helped to empty his garage full of car-related objects, eventually sorting, pricing, advertising and selling his collection. John had always been about paying it forward and his memory was honored when the proceeds from the sale of his beloved items were donated to Loaves & Fishes. His friends were pleased to honor John's memory by helping his neighbors in need, "Because those who knew him best say that is the sort of person he was." Thank you.

Seeking Volunteers

Day	Time	Volunteers needed for:	Notes
Mondays and Wednesdays	7PM-8:00PM	Stocking Session	All ages welcome. Under 15 must be accompanied by an adult.
Wednesdays	9:15AM-12:30PM	Open Pantry Session. Work directly with clients or behind the scenes.	Must be 18. Shifts from 11AM-1:30PM available
Fridays	9:15AM-12:30PM	Open Pantry Session Opportunities to work directly with clients or behind the scenes.	Must be 18. Shifts from 11AM-1:30PM available
2nd Tuesday evening of the month	5:30PM-8PM	Open Pantry Session. Work directly with clients or behind the scenes.	Must be 18.
1st and 3rd Saturdays of the month	8:30AM-11:00AM	Open Pantry Session Opportunities to work directly with clients or behind the scenes.	Must be 18.
Two Friday afternoons every month	3:30PM-4:30PM	Stocking (<i>Fridays preceding 1st and 3rd Saturdays of the month</i>)	All ages welcome. Under 15 must be accompanied by an

Visit our website at www.loavesfishespantry.org to register for an Information Session!

Volunteer

REGISTRATION is now automated!

Visit our website at www.loavesfishespantry.org!

Thanks to Scott Lewis, Board of Trustees member and volunteer extraordinaire, our website is updated and optimized for mobile! Our new and improved website features on-line registration for New Volunteer Information Sessions and on-line registration for volunteer activities through our new volunteer portal!

Loaves & Fishes Food Pantry, Inc.
 PO Box 1
 Ayer, MA 01432

Nonprofit Org.
 U.S. POSTAGE PAID
 Ayer, MA 01432
 Permit No. 4



In an effort to *reduce waste, recycle and redirect our resources*, please consider receiving this newsletter electronically instead of by mail.

Call 978.772.4627 x300 or email tohelp@loavesfishespantry.org and provide your email address!



General MOST NEEDED ITEMS LIST

Ensure, Helpers (hamburger & tuna), Canned Pasta/Canned Chile, Canned White Tuna, Creamed Soups/Hearty Soups, Canned Baked Beans, Canned Pineapple/Pears/Apricots/Mixed Fruit, Canned Tomato Sauce/Puree & Paste, Canned Corn, Crackers/Saltines, Canned Chickpeas/Garbanzo Beans, Condiments (ketchup, mayo, mustard), Pasta (ziti, rotini, shells, rigatoni), Coffee, Tea, Juice, Feminine Care Products, Toothpaste/Toothbrushes, Shampoo/Conditioner, Shaving Products, Deodorant, Soap (Bars)

Contact Us:

Telephone: (978) 772-4627

Visit our website at: www.loavesfishespantry.org

facebook

Find us on Facebook
 Follow us on Twitter

twitter

Collection Box Locations

AYER	HARVARD
Ayer Post Office	Harvard Post Office
Nashoba Valley Medical Center	LITTLETON
North Middlesex Savings Bank	Citizen's Savings Bank
The Cottage Restaurant	Donelan's Supermarket
The Markham Group	North Middlesex Savings Bank
DEVENS	Northern Bank & Trust
North Middlesex Savings Bank	Littleton Police Department
GROTON	Littleton Post Office
Donelan's Supermarket	Knox Realty
Groton Post Office	Market Basket, The Point, Rte 119
Groton Public Library	SHIRLEY
Middlesex Bank	Shirley Post Office
North Middlesex Savings Bank	Hazen Library
Town Hall	North Middlesex Savings Bank
Groton Senior Center	Phoenix Park, Building D
Clover Farm General Store	

Donation boxes can also be found in many places of worship in all six towns served by Loaves & Fishes